

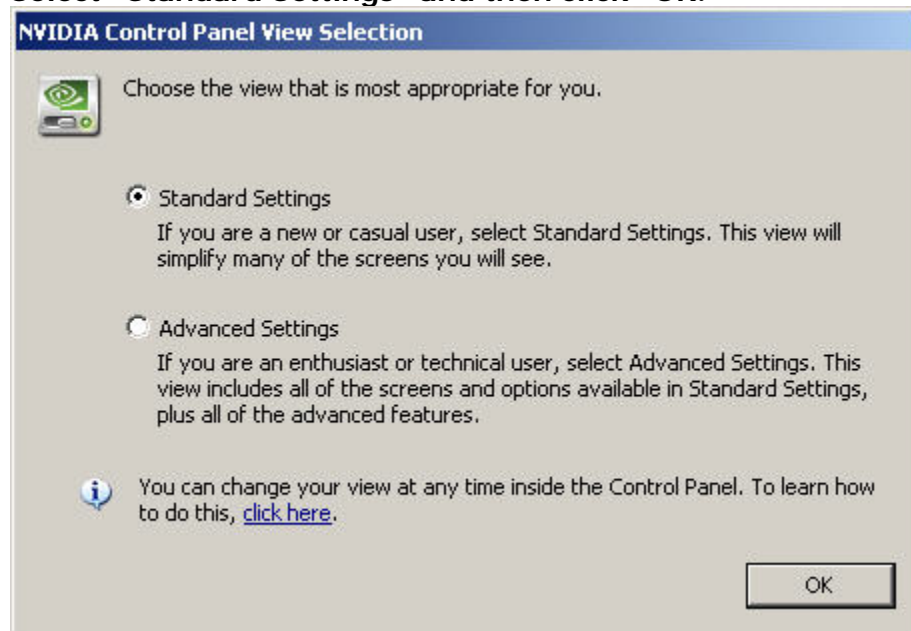
Below you will find the step-by-step directions for hooking up your new Hewlett Packard DC 7800 computer to the TV with an S-video cable.

1. Right click on the desktop to pop up this window.

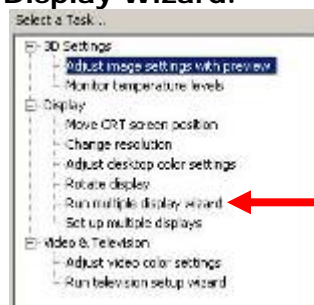


2. Click on "NVIDIA Control Panel."

3. Select "Standard Settings" and then click "OK."



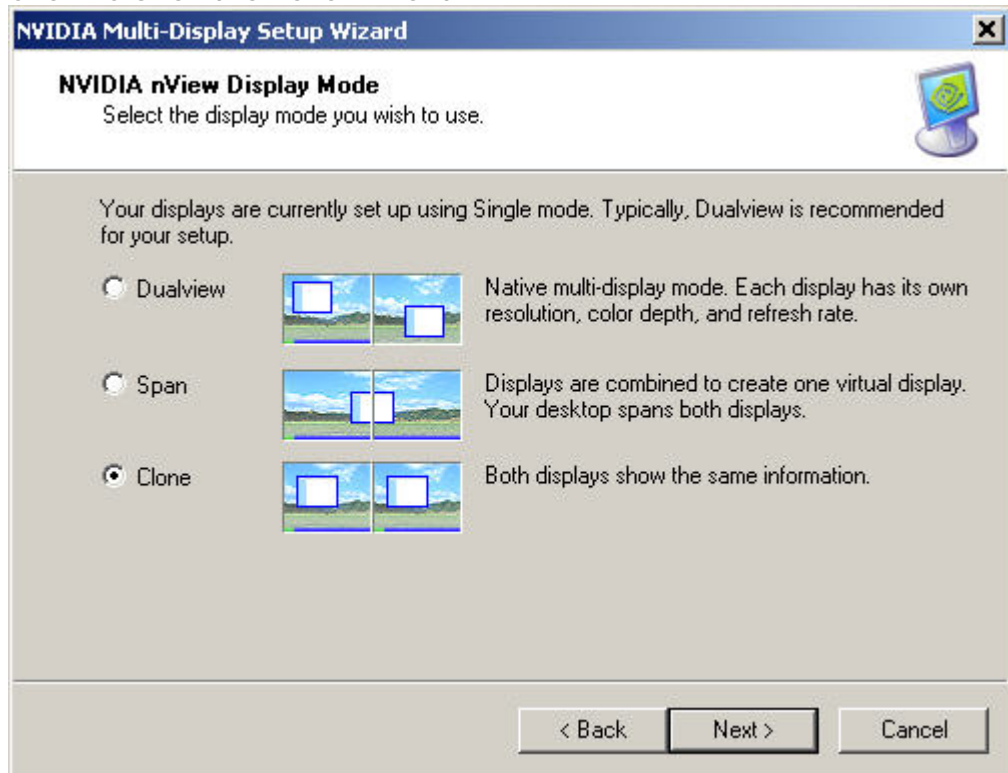
4. Under "Select a Task" on the left hand side click on "Run Multiple Display Wizard."



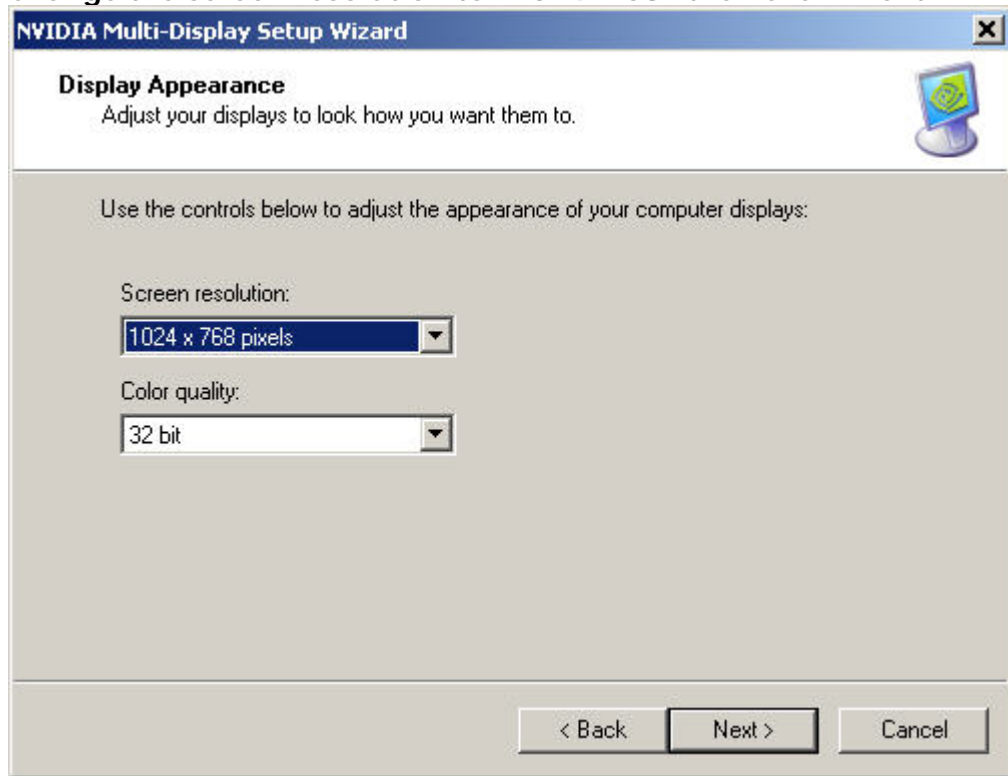
5. Click "Next."



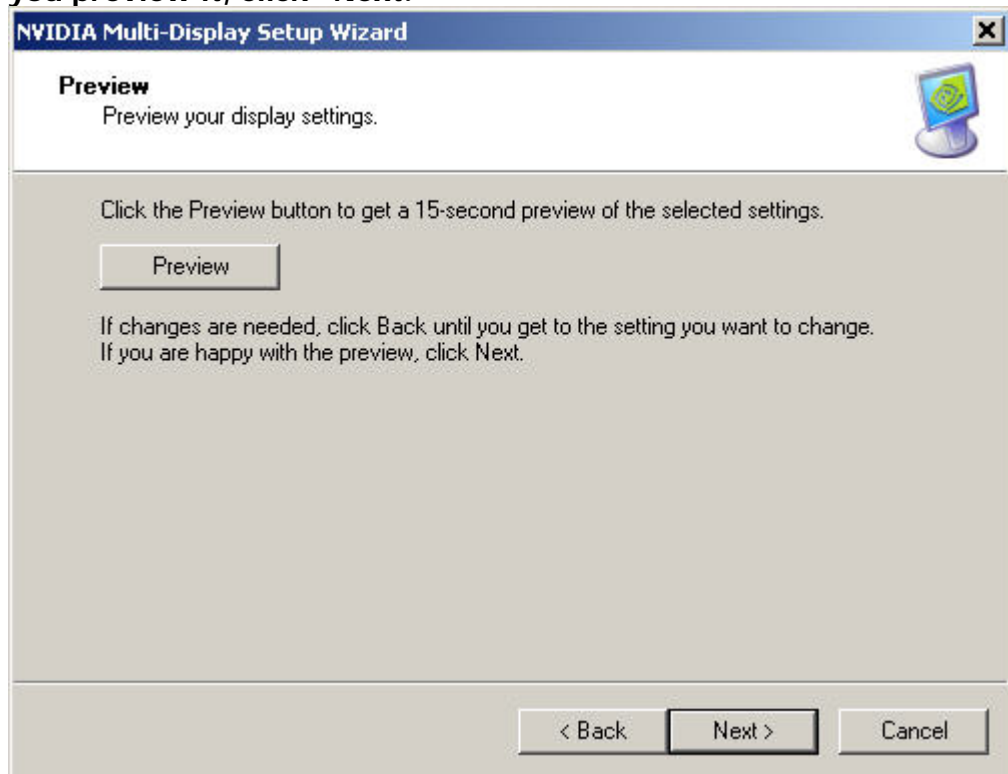
6. Click "Clone" then click "Next."



7. Change the screen resolution to "1024x768" then click "Next."



8. You can preview your settings or skip this and click "Next." After you preview it, click "Next."



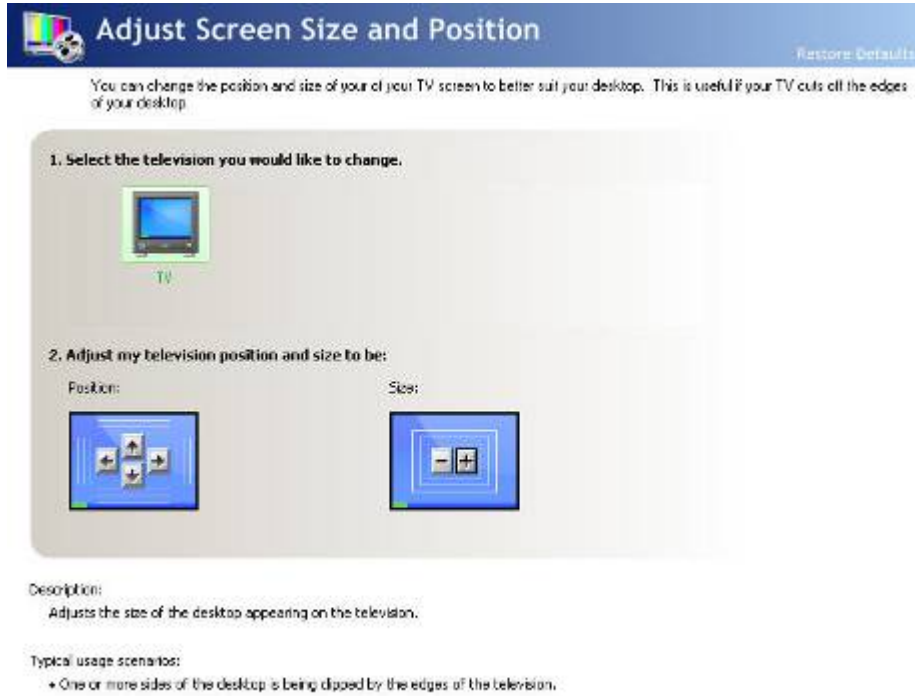
9. Click "Finish."



10. If the image on the TV is a little off center, open the NVIDIA Control Panel again. This time click on "Adjust Screen Size and Position" on the left side of the screen under "Video and Television."



11. Your TV should be highlighted in green. Then click on the arrows to position your screen and use the “- / +” to adjust the size.

The image shows the 'Adjust Screen Size and Position' dialog box in Windows. The title bar is blue with the text 'Adjust Screen Size and Position' and a 'Restore Defaults' link on the right. Below the title bar, there is a small icon of a TV and a mouse cursor. The main content area is light gray and contains the following text and controls:
1. Select the television you would like to change.
A grid of icons representing different display types is shown. One icon, labeled 'TV', is highlighted with a green border.
2. Adjust my television position and size to be:
Position: A blue square icon with four white arrows pointing up, down, left, and right.
Size: A blue square icon with a white border and a minus sign on the left and a plus sign on the right.
Description:
Adjusts the size of the desktop appearing on the television.
Typical usage scenarios:
• One or more sides of the desktop is being clipped by the edges of the television.

12. Click “Apply.”



13. Close out of the NVIDIA Control Panel.